

An aerial photograph of the Taos Ski Valley, showing a vast mountain range covered in snow and evergreen trees. Numerous ski runs are visible, winding down the slopes. At the base of the mountains, a small town or village is nestled in a valley, surrounded by more snow and trees. The sky is clear and blue.

**TAOS**  
SKI VALLEY™

## **TSV Core Village Revitalization**

## **Conceptual Plan Presentation**

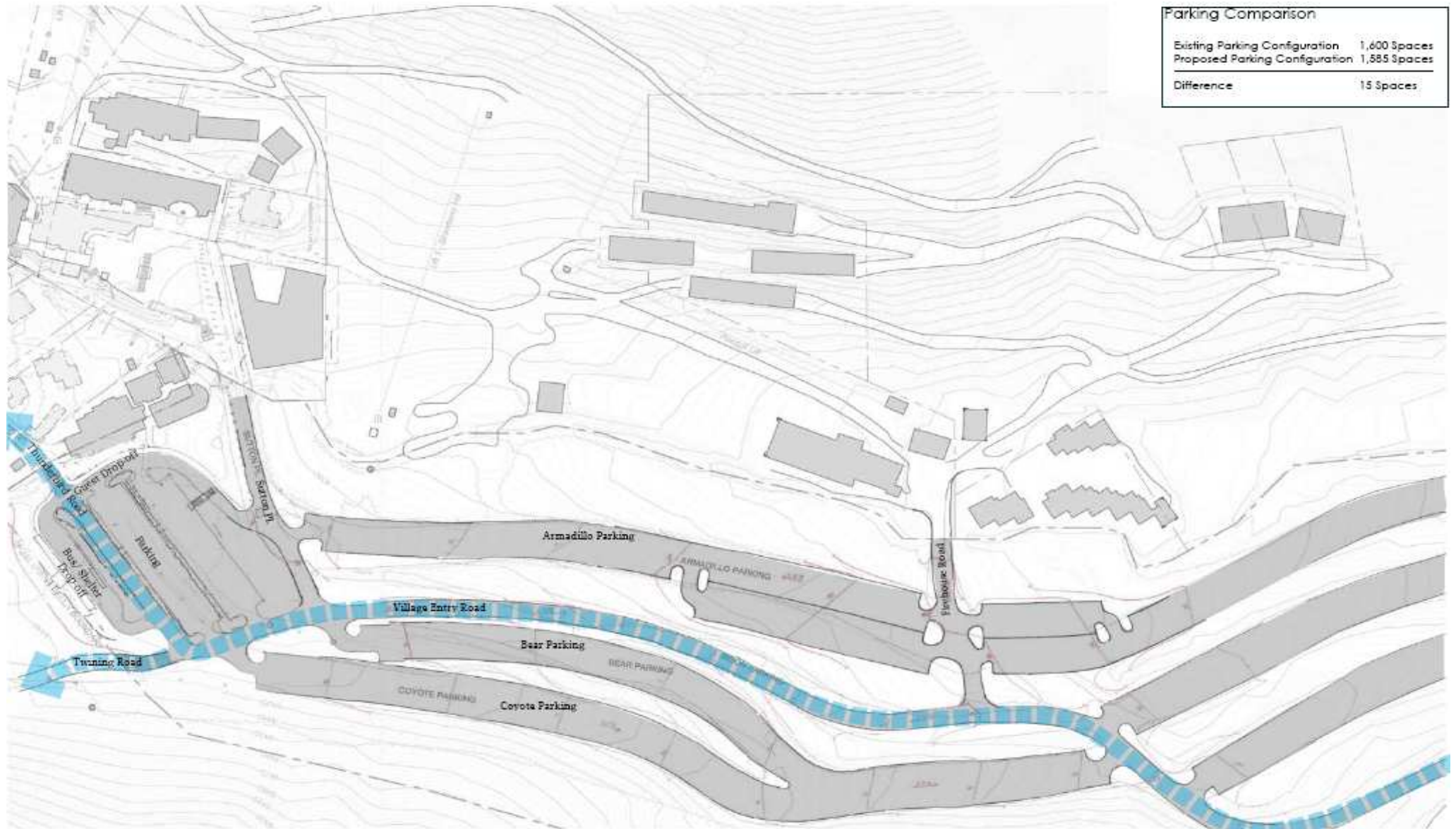
February 6, 2012

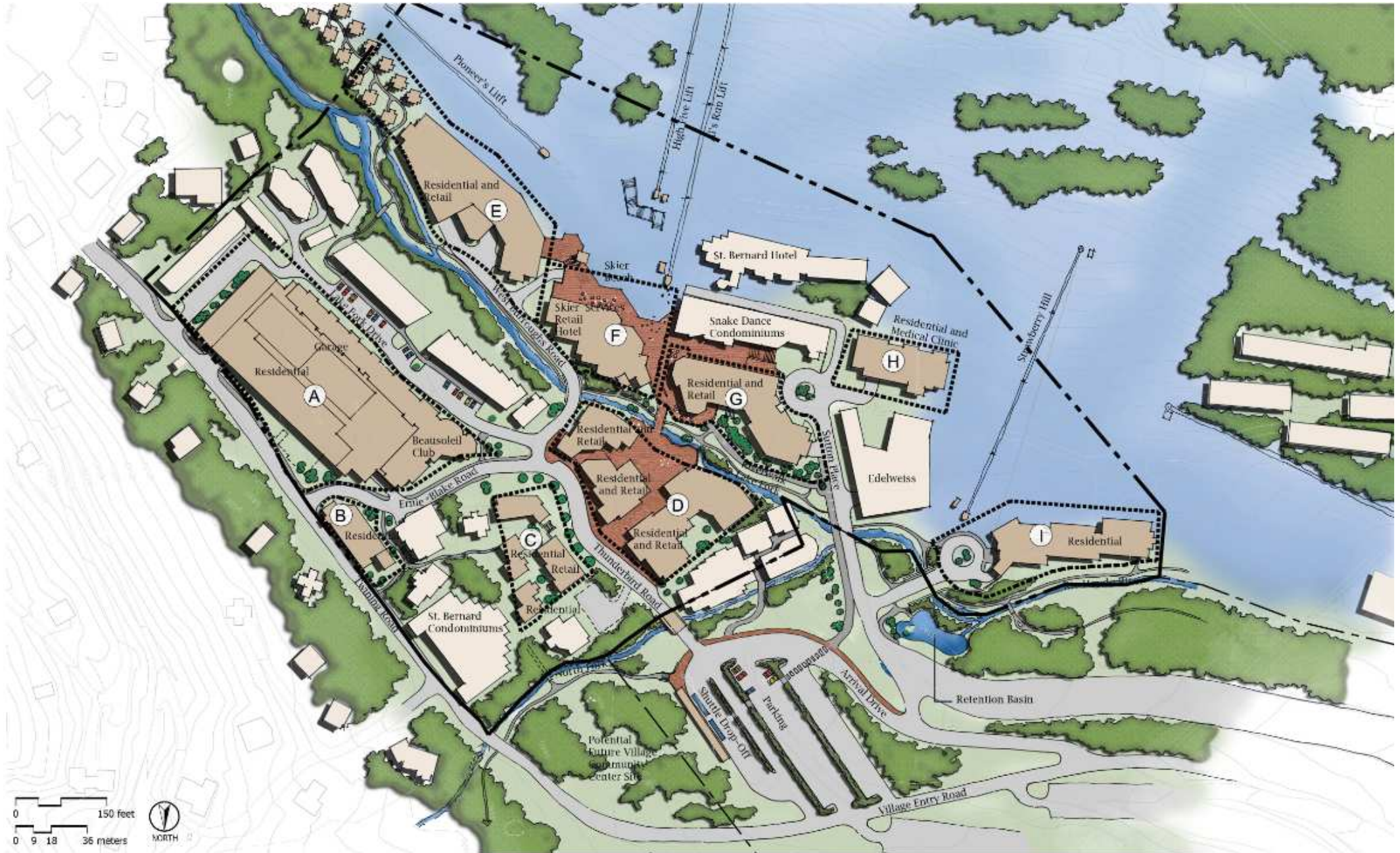


TAOS SKI VALLEY CORE VILLAGE REVITALIZATION

The proposed land uses and infrastructure improvements depicted on this plan are subject to review and modification by the Village of Taos Ski Valley and the respective property owners ... and thus subject to change without notice. This plan should not be relied upon as an accurate depiction of the final development or infrastructure for the Core Village at Taos Ski Valley.

# VILLAGE ENTRY ROAD, ARRIVAL / DROP-OFF AND PARKING





**TAOS SKI VALLEY CORE VILLAGE REVITALIZATION**

The proposed land uses and infrastructure improvements depicted on this plan are subject to review and modification by the Village of Taos Ski Valley and the respective property owners ... and thus subject to change without notice. This plan should not be relied upon as an accurate depiction of the final development or infrastructure for the Core Village at Taos Ski Valley.





**TAOS SKI VALLEY CORE VILLAGE REVITALIZATION**

The proposed land uses and infrastructure improvements depicted on this plan are subject to review and modification by the Village of Taos Ski Valley and the respective property owners ... and thus subject to change without notice. This plan should not be relied upon as an accurate depiction of the final development or infrastructure for the Core Village at Taos Ski Valley.









**TAOS SKI VALLEY CORE VILLAGE REVITALIZATION**

The proposed land uses and infrastructure improvements depicted on this plan are subject to review and modification by the Village of Taos Ski Valley and the respective property owners ... and thus subject to change without notice. This plan should not be relied upon as an accurate depiction of the final development or infrastructure for the Core Village at Taos Ski Valley.



**TAOS SKI VALLEY CORE VILLAGE REVITALIZATION**

The proposed land uses and infrastructure improvements depicted on this plan are subject to review and modification by the Village of Taos Ski Valley and the respective property owners ... and thus subject to change without notice. This plan should not be relied upon as an accurate depiction of the final development or infrastructure for the Core Village at Taos Ski Valley.



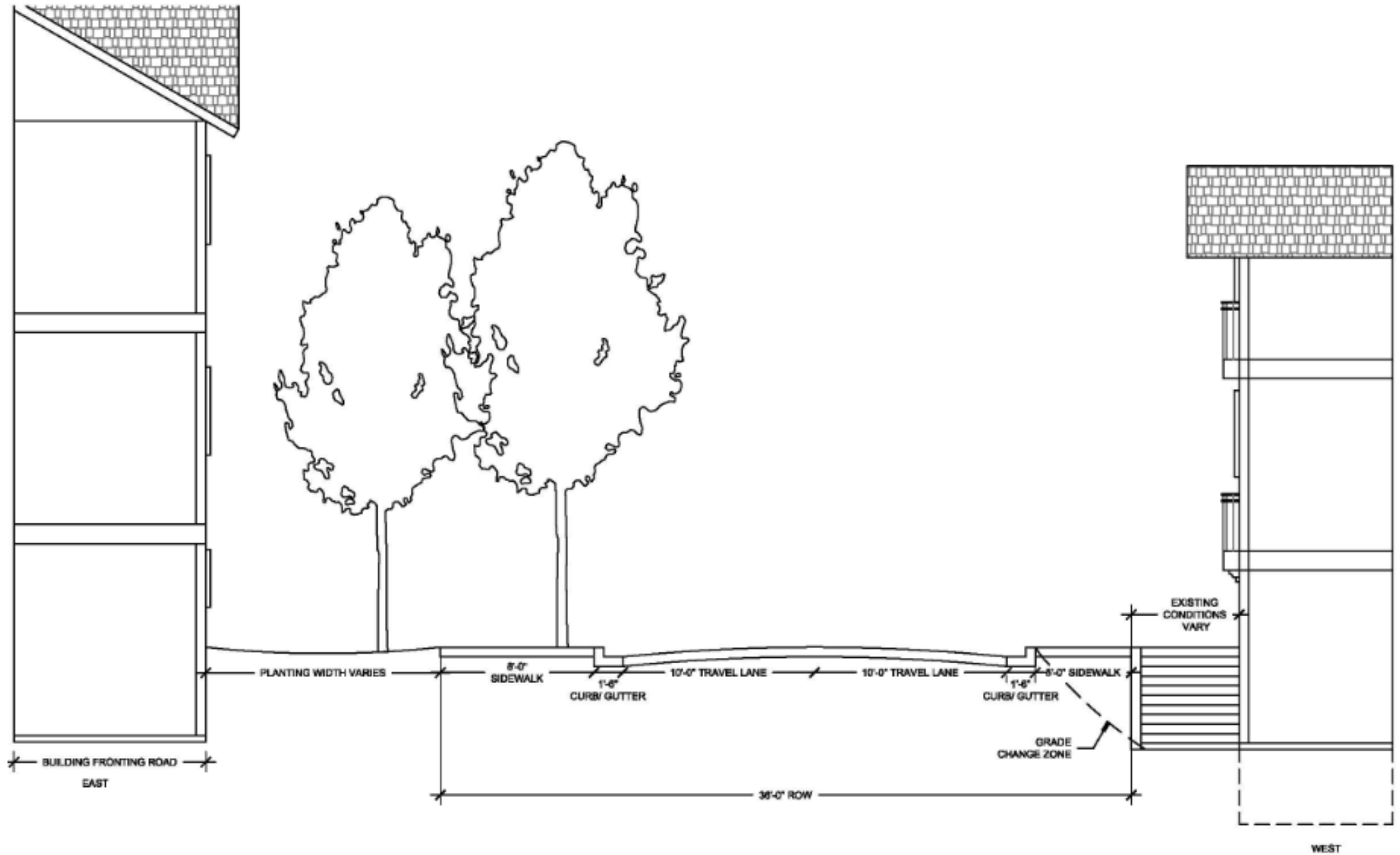
**TAOS SKI VALLEY CORE VILLAGE REVITALIZATION**

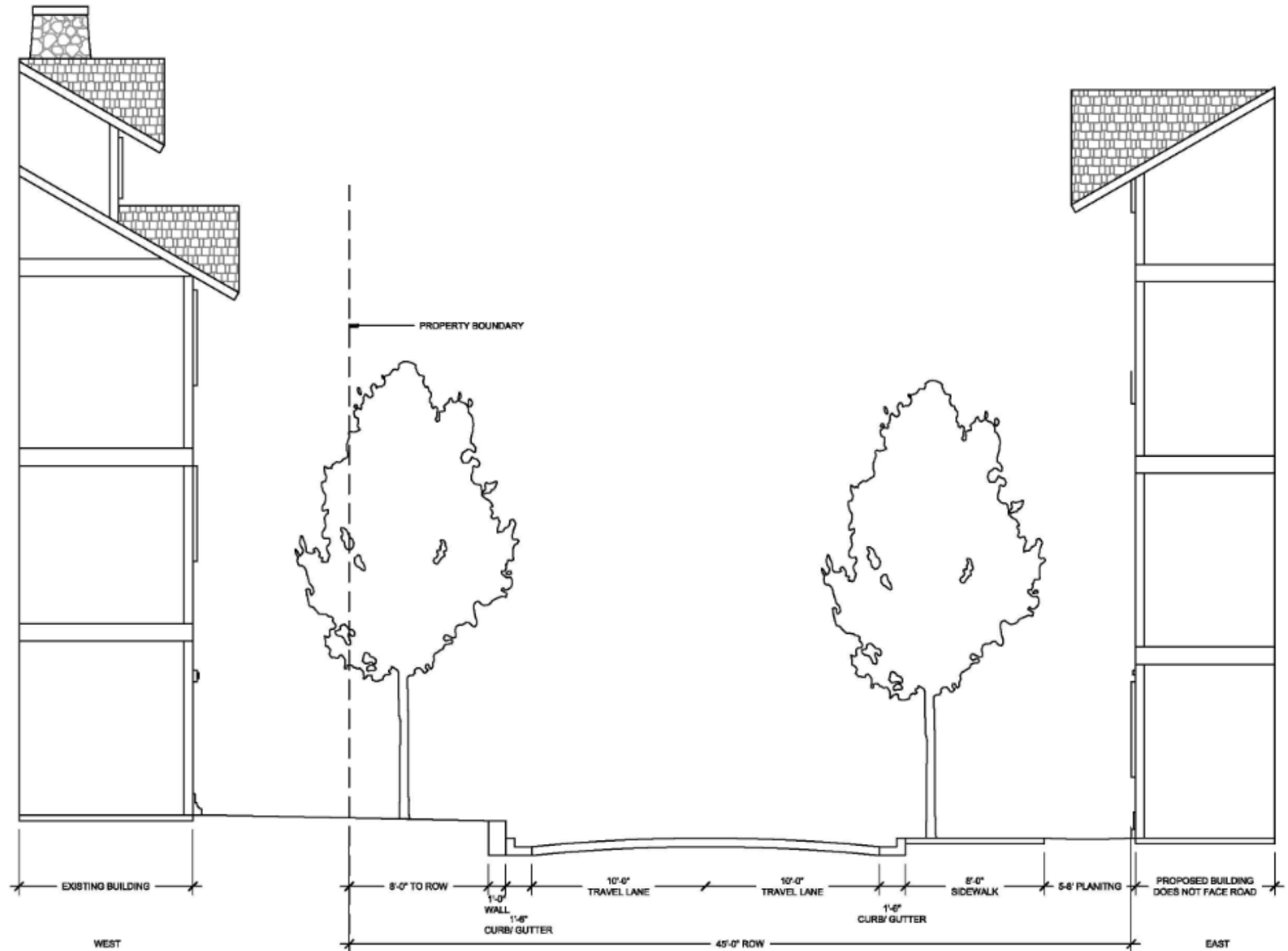
The proposed land uses and infrastructure improvements depicted on this plan are subject to review and modification by the Village of Taos Ski Valley and the respective property owners ... and thus subject to change without notice. This plan should not be relied upon as an accurate depiction of the final development or infrastructure for the Core Village at Taos Ski Valley.

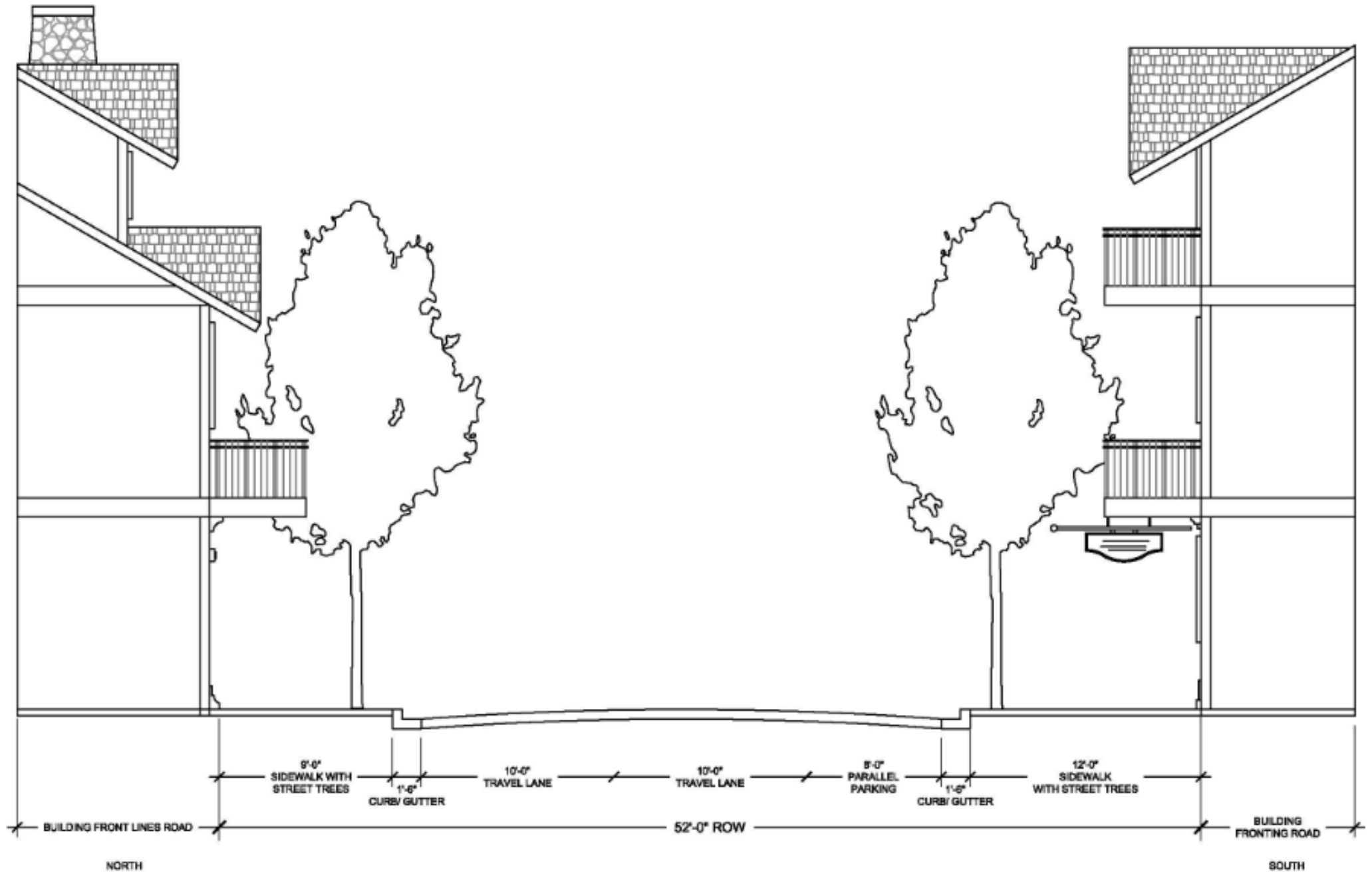


TAOS SKI VALLEY CORE VILLAGE REVITALIZATION

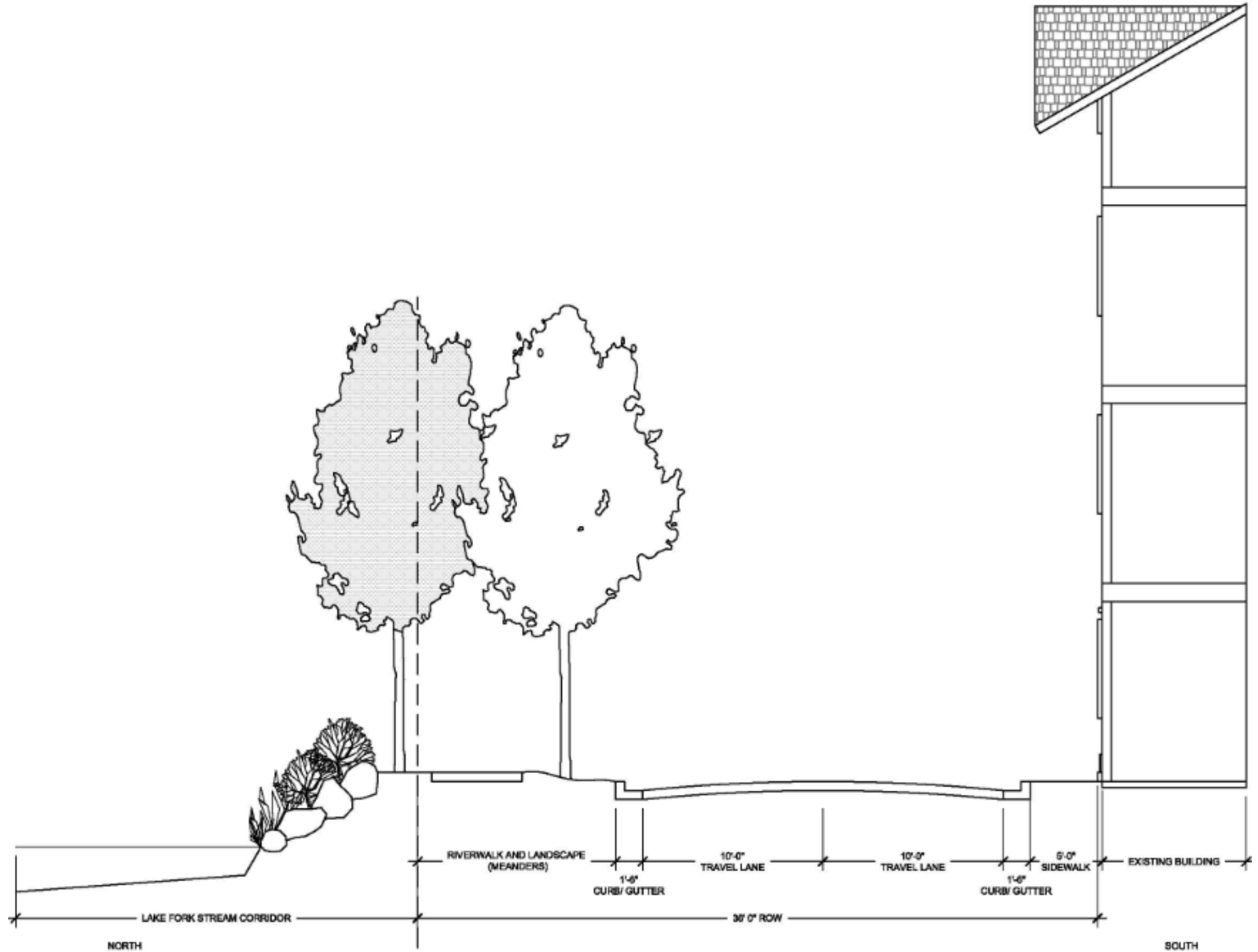
The proposed land uses and infrastructure improvements depicted on this plan are subject to review and modification by the Village of Taos Ski Valley and the respective property owners ... and thus subject to change without notice. This plan should not be relied upon as an accurate depiction of the final development or infrastructure for the Core Village at Taos Ski Valley.







# WEST BURROUGHS ROAD CROSS-SECTION



## TAOS SKI VALLEY CORE VILLAGE REVITALIZATION

The proposed land uses and infrastructure improvements depicted on this plan are subject to review and modification by the Village of Taos Ski Valley and the respective property owners ... and thus subject to change without notice. This plan should not be relied upon as an accurate depiction of the final development or infrastructure for the Core Village at Taos Ski Valley.





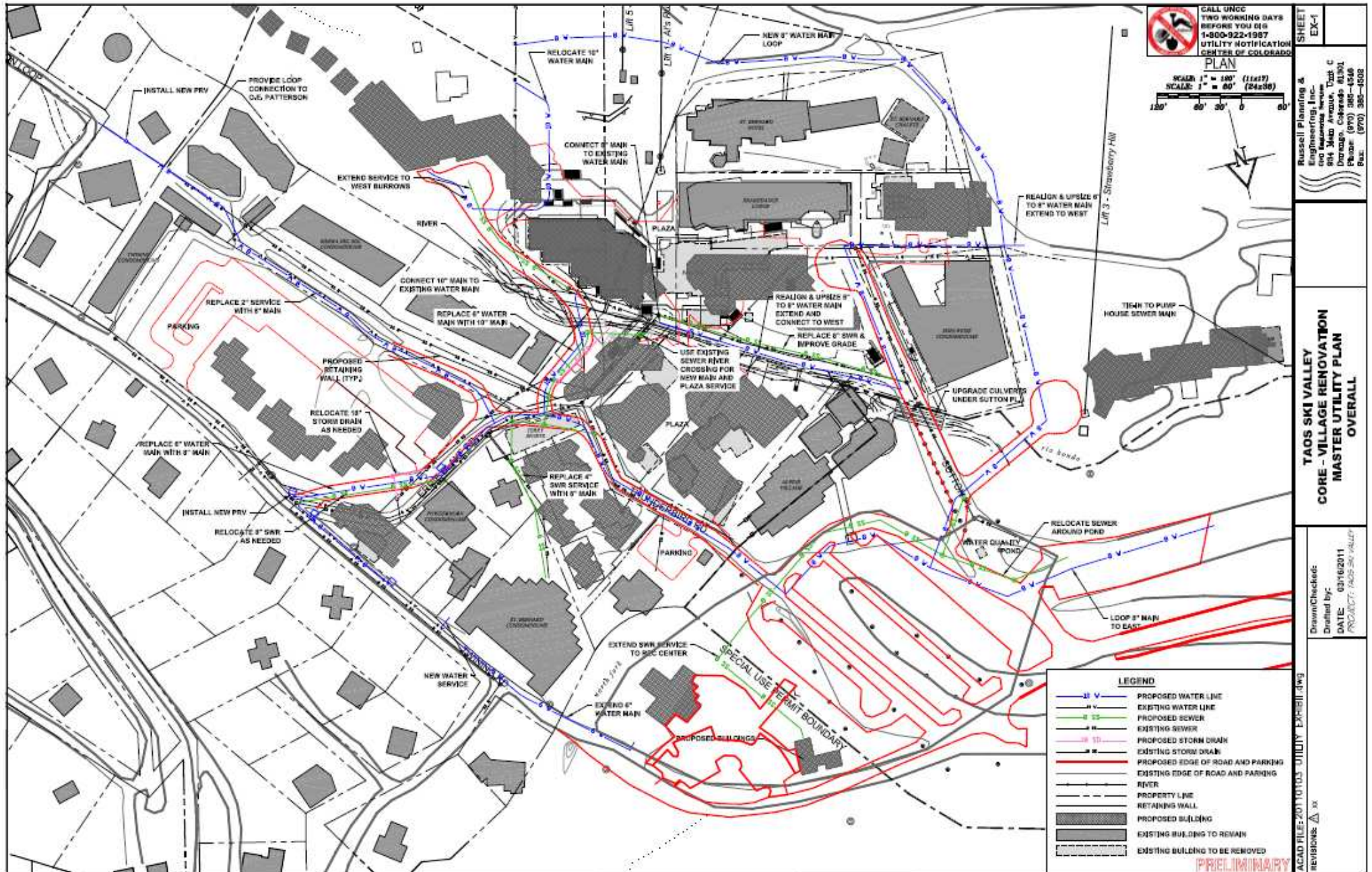
**TAOS SKI VALLEY CORE VILLAGE REVITALIZATION**

The proposed land uses and infrastructure improvements depicted on this plan are subject to review and modification by the Village of Taos Ski Valley and the respective property owners ... and thus subject to change without notice. This plan should not be relied upon as an accurate depiction of the final development or infrastructure for the Core Village at Taos Ski Valley.



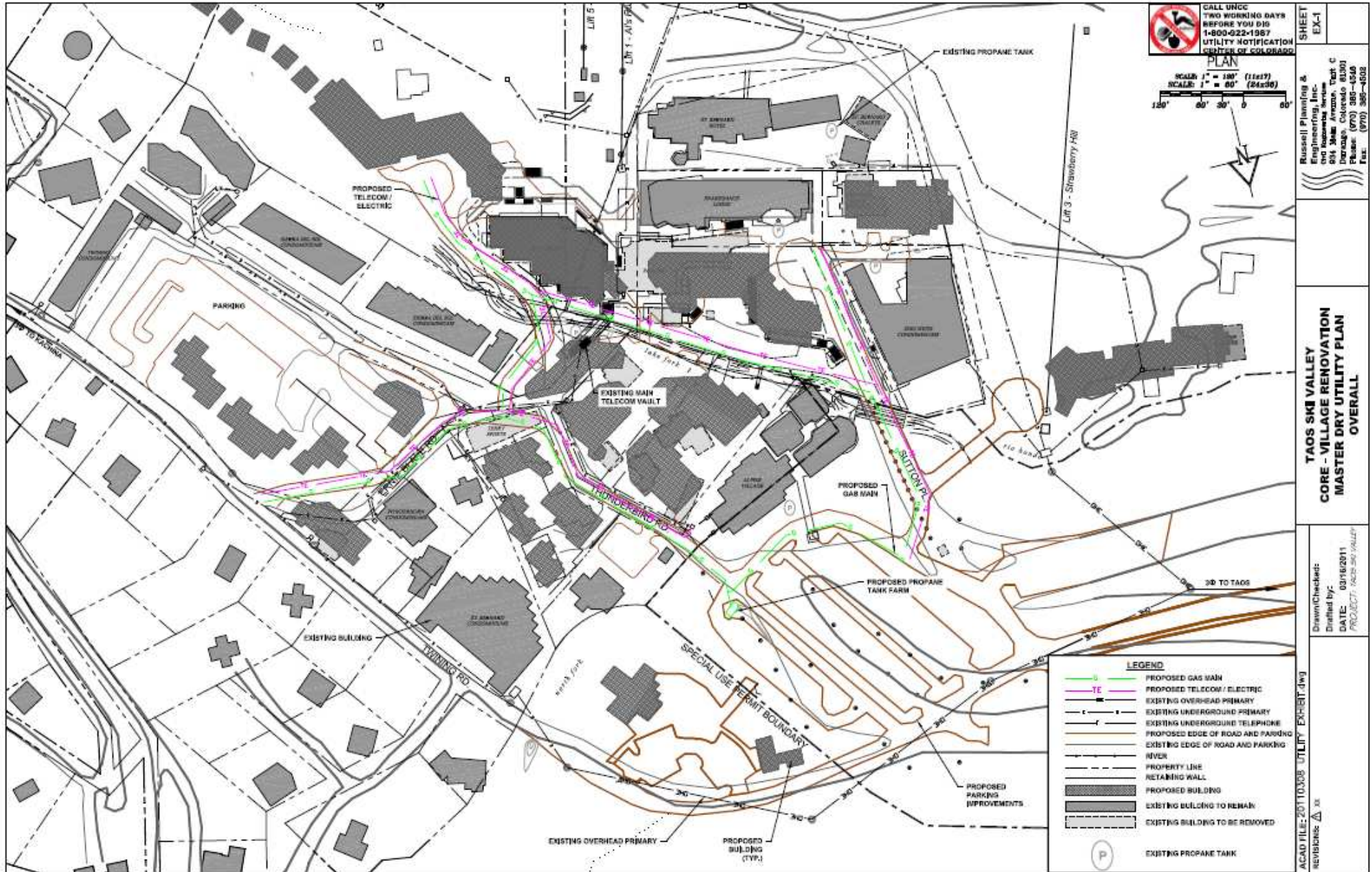
**TAOS SKI VALLEY CORE VILLAGE REVITALIZATION**

The proposed land uses and infrastructure improvements depicted on this plan are subject to review and modification by the Village of Taos Ski Valley and the respective property owners ... and thus subject to change without notice. This plan should not be relied upon as an accurate depiction of the final development or infrastructure for the Core Village at Taos Ski Valley.



TAOS SKI VALLEY CORE VILLAGE REVITALIZATION

The proposed land uses and infrastructure improvements depicted on this plan are subject to review and modification by the Village of Taos Ski Valley and the respective property owners ... and thus subject to change without notice. This plan should not be relied upon as an accurate depiction of the final development or infrastructure for the Core Village at Taos Ski Valley.



TAOS SKI VALLEY CORE VILLAGE REVITALIZATION

The proposed land uses and infrastructure improvements depicted on this plan are subject to review and modification by the Village of Taos Ski Valley and the respective property owners ... and thus subject to change without notice. This plan should not be relied upon as an accurate depiction of the final development or infrastructure for the Core Village at Taos Ski Valley.