

An aerial photograph of Taos Ski Valley at dusk. The scene is dominated by snow-covered mountains and dense evergreen forests. In the foreground, several large resort buildings are illuminated with warm yellow lights, contrasting with the cool blue and purple tones of the twilight sky. Ski lift towers and runs are visible on the slopes. The overall atmosphere is serene and picturesque.

Taos Ski Valley

Williams Lake Trailhead

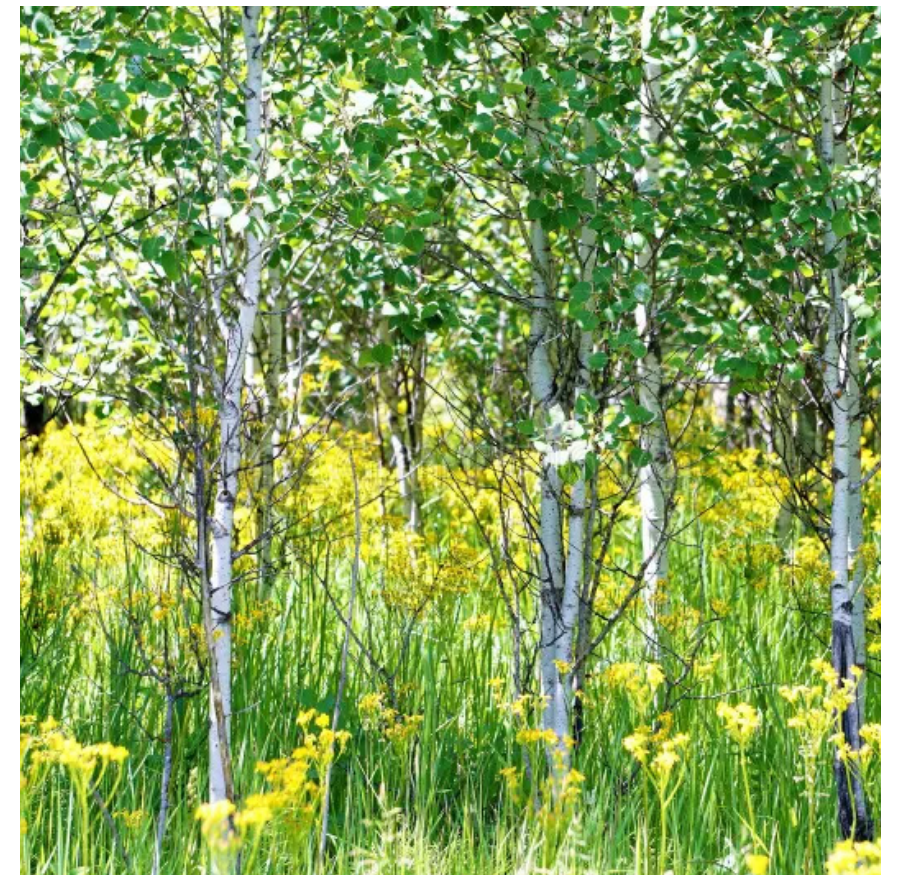
OCTOBER 2024



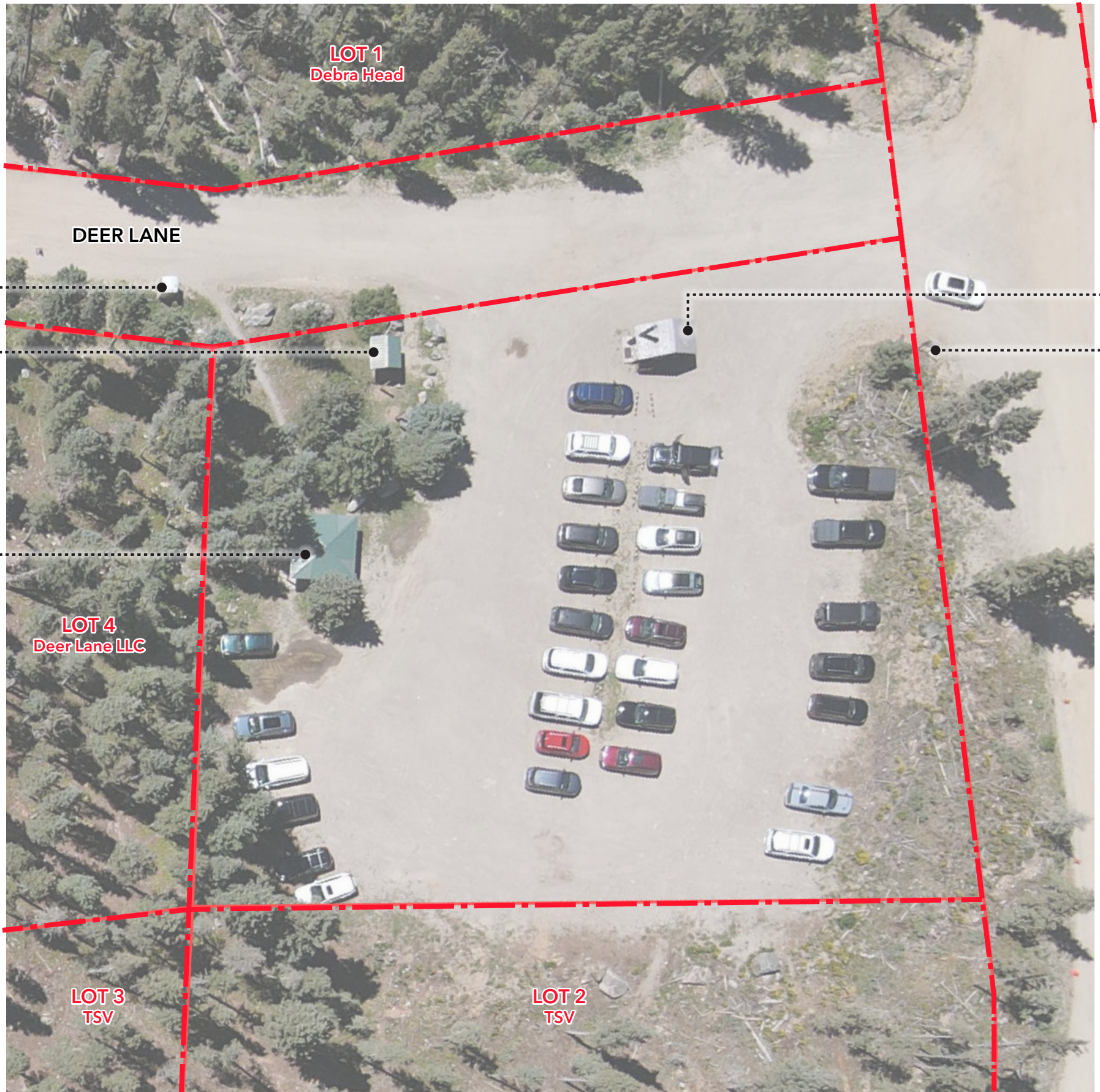
Williams Lake Trail | Existing Conditions



Existing Conditions | Williams Lake Trailhead & Parking



Vision | Williams Lake Trailhead & Parking



Porta Potty to be Relocated

Vault Toilet to Remain

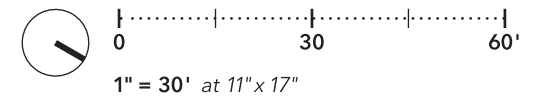
Signage to be Relocated

Signage to be Replaced

Picnic Pavillion to Remain

Williams Lake Trailhead & Parking | Existing Conditions

EXISTING:
~50 PARKING SPACES

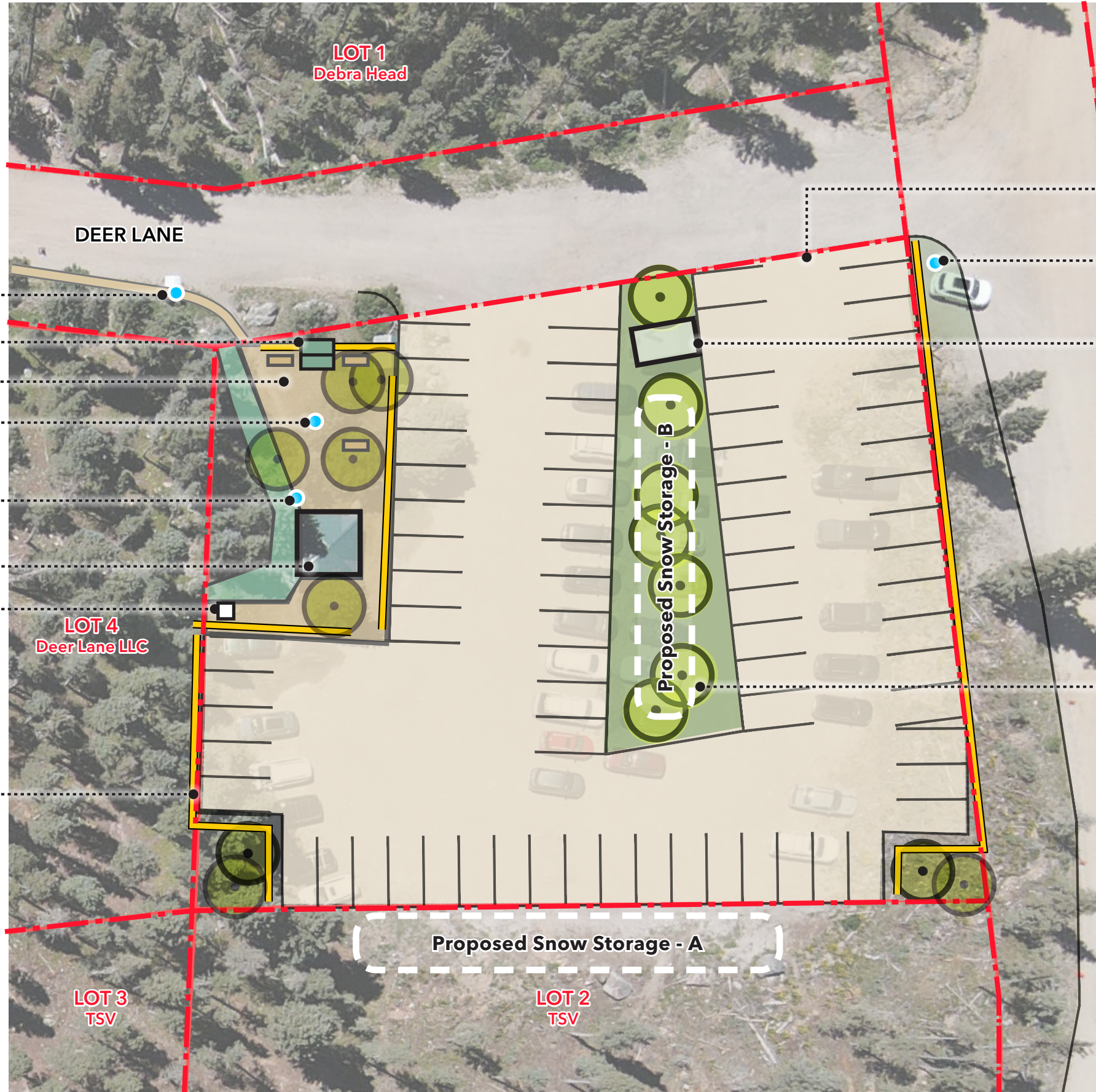




- Relocated Williams Lake Trail Sign (on Village Land)
- Relocated Trailhead Kiosk
- Decomposed Granite Trail & Plaza
- New Directional Signage
- Educational Native Plant Garden
- Picnic Pavillion to Remain
- Relocated Porta Potty

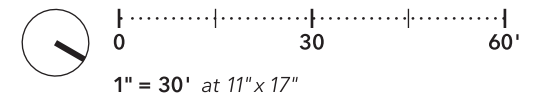


Fencing to Match Parking at Bavarian



- Resurfaced Gravel Lot (Wide for Snow Plows)
- New Kachina Basin Signage (on Village Land)
- Vault Toilet to Remain
- Aspen Trees, Typ. Wide Planting Strip for Snow Storage

**PROPOSED:
70 PARKING SPACES**



Williams Lake Trailhead & Parking | Proposed Improvements



HART HOWERTON

NEW YORK · SAN FRANCISCO